

The Vinyl Source

Thank you for have chosen one of our armboards.

How to install the armboard for Systemdek IIX turntables.

Step Nr 1

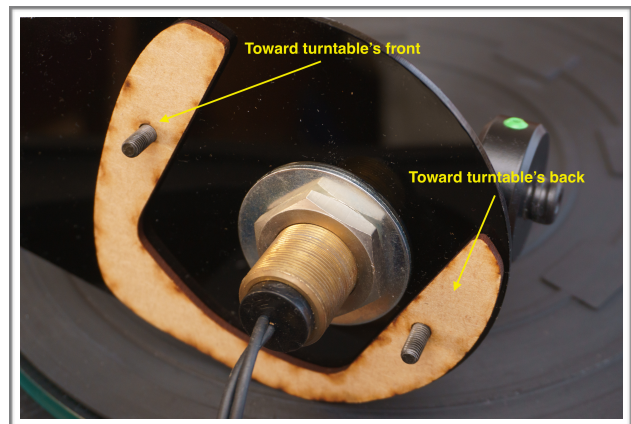
Remove the existing board, the existing M5 screws will be used to fix the new board.

Step Nr 2

Mount your tonearm on the armboard following the manufacturer's instruction, if you purchased an armboard for Rega 3-points tonearms or SME tonearms, then you need to use the self-tapping screws supplied to fix your tonearm on the board; the holes are already tapped, but anyway, the provided screws are still a tight fit, use care installing these screws.

Step Nr 3

The board is supplied with 3 MDF spacers. Each spacer is 3mm thick, put the two M5 screws in the armboard's holes for guidance and then peel off the protective tape of the adhesive pads, stuck the three spacers one on another like shown in the picture.



The spacers are not symmetric, study the pictures carefully to understand which is the right mounting side.

The Vinyl Source

Step Nr 4

Mount the new board in place using the two original M5 screws, do not tighten the screw too much, perspex is hard and fragile and can crack if too much tension is applied on the board.



If you are not satisfied, you can return this board with all the accessories to:

The Vinyl Source Ltd % Marco Mazzocchi
80 Etime Street Wishaw ML2 0NT

within 30 days from the date of purchase.

The Vinyl Source Ltd
Registered office:
71-75, Shelton Street, London WC2H 9JQ